

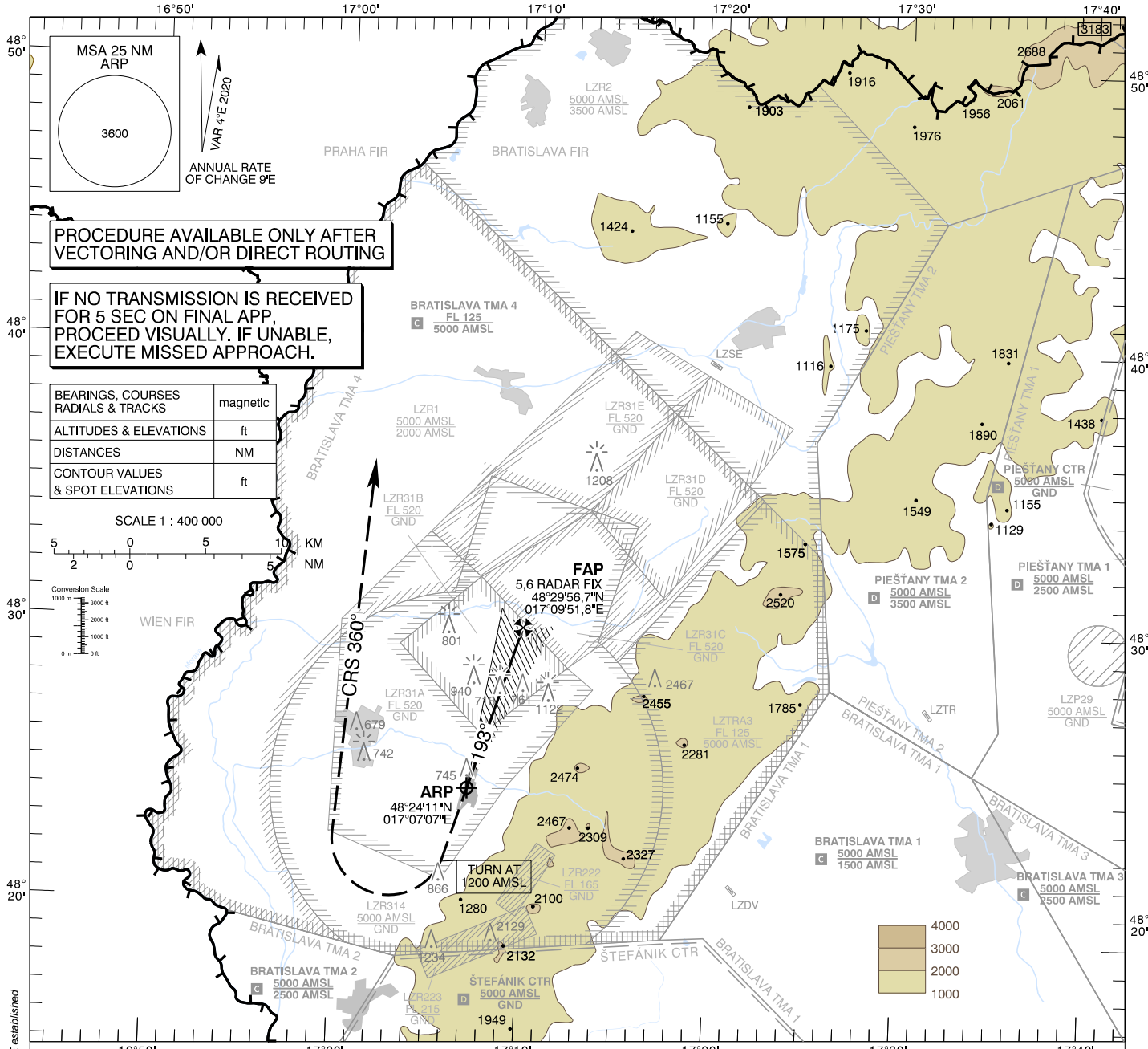
**INSTRUMENT
APPROACH
CHART - ICAO**

TRANSITION ALTITUDE
10 000 ft

AD ELEV 689 - 25 hPa
THR RWY 19 ELEV 686 - 25 hPa

MALACKY PRECISION 127,150
MALACKY RADAR 120,750 (259,625)
MALACKY TOWER 129,575 (120,750)

**MALACKY (LZMC)
PAR RWY 19
ACFT CAT A/B/C/D**

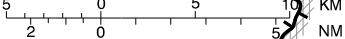


**PROCEDURE AVAILABLE ONLY AFTER
VECTORED AND/OR DIRECT ROUTING**

**IF NO TRANSMISSION IS RECEIVED
FOR 5 SEC ON FINAL APP,
PROCEED VISUALLY. IF UNABLE,
EXECUTE MISSED APPROACH.**

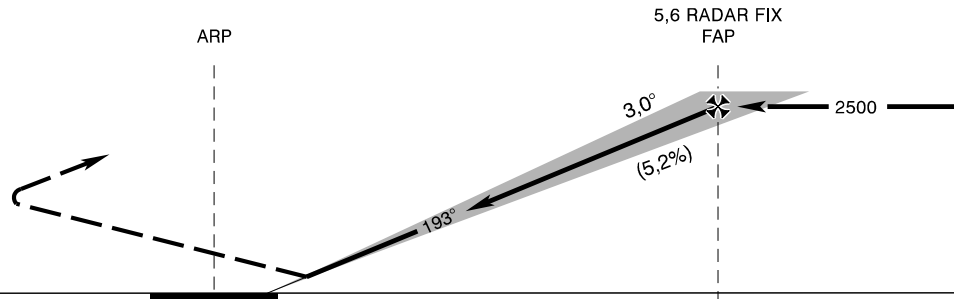
BEARINGS, COURSES RADIALS & TRACKS	magnetic
ALTITUDES & ELEVATIONS	ft
DISTANCES	NM
CONTOUR VALUES & SPOT ELEVATIONS	ft

SCALE 1 : 400 000



MISSED APPROACH

Climb STRAIGHT AHEAD, at 1200 AMSL
turn RIGHT to CRS 360°, climbing to 4000 AMSL,
then as directed by RADAR CONTROLLER.
MAX IAS 185 kt until established on CRS 360°.
No turn before ARP.



TCH 56,8

THR RWY 19 ELEV 686 - 25 hPa

NM to/from THR RWY 19

OCA (OCH)	ASC	A	B	C	D
Straight - in Approach	2,5%	ft 951 (265)	963 (277)	971 (285)	982 (296)
Circling (* see Note)		ft 1120 (431)	1190 (501)	1650 (961)	1810 (1121)
VIS		m 1800	2800	3600	4600

*Note: Not authorized
EAST
of the EXTD RCL

RADAR FIX	NM	7,0	6,0	5,0	4,0	3,0	2,0	1,0
ALTITUDES	ft	2958	2628	2300	1974	1649	1326	1005

Ground speed	kt	70	90	100	120	140	160	180
Rate of descent (5,2%)	ft/min	372	478	531	637	743	849	955

CHANGES: LZR131A and LZR131B withdrawn; new LZR31A, LZR31B, LZR31C, LZR31D, LZR31E established